

# UltraRib™

NON-PRESSURE-RATED  
PVC PROFILE/RIB PIPE

 **ASTM F794**  
**AASHTO M304**

# UltraCorr™

NON-PRESSURE-RATED  
PVC CORRUGATED PIPE

**ASTM F949, ASTM F794**  
**AASHTO M304**



DELIVERING GOOD WATER TO YOU

Ultra Rib/Ultra Corr: Gaskets ASTM F477, Joints ASTM D3212

## MARKETS



Sewer



Storm Drain

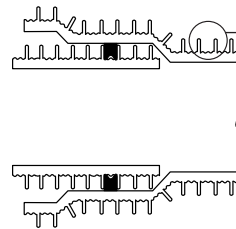
## DESCRIPTION



Ultra Rib

### ULTRA RIB

**Nominal Laying Length: 14 feet**  
*(Laying length tolerances are in accordance with ASTM and AASHTO standards)*

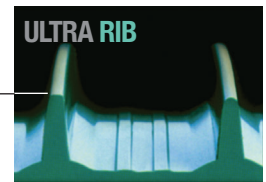


### SEWER PIPE SIZES:

8", 10", 12", 15", 18", 21", 24", 27"

### STORM DRAIN PIPE SIZES:

18", 21", 24"



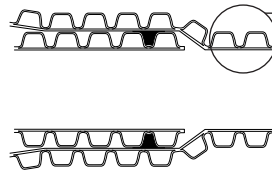
Color:  Green



Ultra Corr

### ULTRA CORR

**Nominal Laying Length: 14 feet**  
*(Laying length tolerances are in accordance with ASTM and AASHTO standards)*

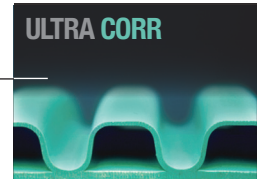


### SEWER PIPE SIZES:

24", 27", 30", 36"

### STORM DRAIN PIPE SIZES:

N/A



Color:  Green

## BENEFITS

### INSTALLATION

Lightweight pipes reduce manpower requirements for installation.

Long laying lengths eliminate cost for unnecessary joints.

Field-cut with a power saw or handsaw; bevel without complicated machinery.

Made in America 

### FEATURES

Unaffected by corrosive elements, sewer gas, sulfuring acid, alkaline or acidic soils.

Resistance to abrasion, gouging and scouring and is superior to common piping materials.

High flow capacity makes flatter grades or smaller diameter pipe possible.

**SUBMITTAL AND DATA SHEET**

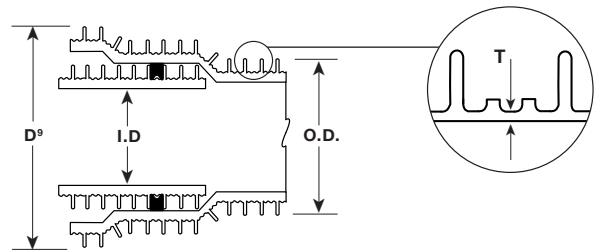
**ULTRA RIB SEWER PIPE ASTM F794 & AASHTO M304**

PIPE SIZE (IN)	NOM. O.D. (IN)	AVG. I.D. (IN)	MIN. T. (IN)	APPROX. D <sup>9</sup> (IN)	APPROX. WGT (LBS/FT)
PIPE STIFFNESS: 46 psi					
8	8.81	7.908	0.060	10.20	2.50
10	11.02	9.859	0.070	12.80	3.50
12	13.10	11.736	0.085	15.26	4.90
15	15.91	14.361	0.105	18.04	7.30
18	19.32	17.608	0.130	22.02	10.50
21	22.92	20.778	0.160	26.17	14.50
24	25.77	23.514	0.180	28.91	21.20
27*	29.14	26.490	0.205	32.85	24.70

**Product Standard:** ASTM F794, AASHTO M304  
**Pipe Compound:** ASTM D1784 Cells Class 12454  
**Gasket:** ASTM F477  
**Integral Bell Joint:** ASTM D3212  
**Nominal Laying Length:** 14 feet  
 (Laying length tolerances are in accordance with ASTM and AASHTO standards.)  
**Installation:** JM Eagle™ Ultra Rib Installation Guide.

Manning Coefficient (n) = 0.009  
 Hazen-Williams Coefficient (c) = 150

\*Please call prior to order regarding availability.



D<sup>9</sup>: Bell Outside Diameter  
 I.D.: Inside Diameter  
 O.D.: Outside Diameter  
 T: (Minimum Wall Thickness)

**ULTRA RIB STORM DRAIN PIPE AASHTO M304**

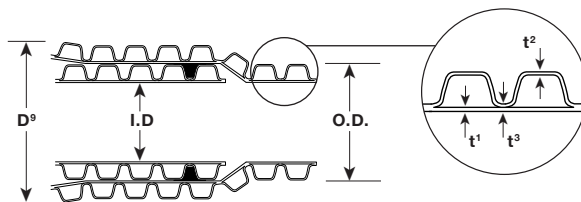
PIPE SIZE (IN)	NOM. O.D. (IN)	AVG. I.D. (IN)	MIN. T. (IN)	APPROX. D <sup>9</sup> (IN)	APPROX. WGT (LBS/FT)
PIPE STIFFNESS: 46 psi					
18	19.32	17.687	0.085	22.25	8.84.6
21	21.73	20.907	0.100	22.25	11.07.7
24	25.48	23.644	0.115	28.13	14.30.8

**ULTRA CORR SEWER PIPE ASTM F949/F794 & AASHTO M304**

PIPE SIZE (IN)	NOM. O.D. (IN)	AVG. I.D. (IN)	INNER WALL t <sup>1</sup> (IN)*	OUTER WALL t <sup>2</sup> (IN)	AT VALLEY t <sup>3</sup> (IN)	APPROX. D <sup>9</sup> (IN)	APPROX. WGT (LBS/FT)
PIPE STIFFNESS: 46 psi							
24	25.58	23.478	0.115	0.085	0.123	28.7	18.2
27	28.86	26.464	0.125	0.091	0.137	32.5	20.2
30	32.15	29.480	0.135	0.105	0.147	35.8	26.0
36	38.74	35.487	0.155	0.125	0.171	43.4	36.1

**Product Standard:** ASTM F794/7949, AASHTO M304  
**Pipe Compound:** ASTM D1784 Cells Class 12454  
**Gasket:** ASTM F477  
**Integral Bell Joint:** ASTM D3212  
**Nominal Laying Length:** 14 feet  
 (Laying length tolerances are in accordance with ASTM and AASHTO standards.)  
**Installation:** JM Eagle™ Ultra Corr Installation Guide.

Manning Coefficient (n) = 0.009  
 Hazen-Williams Coefficient (c) = 150



D<sup>9</sup>: Bell Outside Diameter  
 I.D.: Inside Diameter  
 O.D.: Outside Diameter  
 t<sup>1</sup>: Inner Wall Thickness  
 t<sup>2</sup>: Outer Wall Thickness  
 t<sup>3</sup>: Valley Wall Thickness

