

# HDPE COMMUNICATION DUCT



MADE IN AMERICA



ASTM F2160,  
CONDUIT

## MARKETS



TELECOM



CATV



COMMERCIAL  
& INDUSTRIAL



ENERGY



DOT

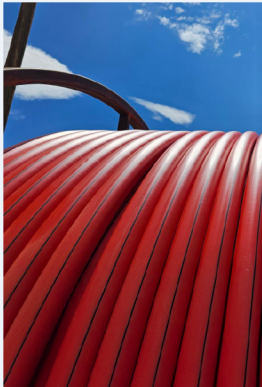


ENTERPRISE



RENEWABLE ENERGY

## DESCRIPTION



### HDPE COMMUNICATION DUCT

#### Nominal Sizes (IN):

**3/4-inch - 6-inch diameters**

\*Available in 96" and 102" continuous reels.  
Other sizes available upon request

(8-inch and above available upon request),  
with or without pull tape

### PIPE COLOR

BLUE

GREEN

BLACK

ORANGE

WHITE

GREY

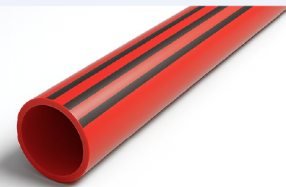
RED

TERRACOTA

Custom colors available upon request

It can be joined by various heat fusion methods including electrofusion, socket fusion, butt fusion and saddle fusion, as well as mechanical connections.

With a COF 30 percent lower than PVC, it remains ductile at low temperatures and offers a maximum operating temperature of 90 degrees, which is compatible with the operating temperatures of power cables.



## BENEFITS

**JM Eagle HDPE Communication Duct is the easy-to-install, high-performance solution to communications applications.**

### INSTALLATION

- Lightweight and flexible, it comes in long lengths, allowing for easy and convenient installation.
- Because of its flexible nature, it reduces the use of fittings and remains ductile at low temperatures.
- Its longer pull lengths mean manholes can be placed farther apart, with fewer joints needed for directional drilling and plowing.
- Its lengths allow for greater flexibility in system design, as well as the ability to follow trench contours and avoid underground obstacles.

### FEATURES

- It is recognized in the industry for its high stress crack resistance, a coefficient of friction 30 percent lower than PVC, and high tensile strength.
- It is resistant to corrosive chemicals and aggressive soils and is impervious to bacteria and fungus.
- JM Eagle's high-density polyethylene communication duct pipe is the key to a modern electrified infrastructure.
- Suitable for use as conduit, duct, inner-duct with communication, telecom, fiber optic high-speed data, power wire, and cable applications.



# HDPE COMMUNICATION DUCT



## SUBMITTAL AND DATA SHEET

PIPE SIZE (IN)	AVG. O.D. (IN)	MIN. T. (IN)	AVG. I.D. (IN)	MIN. T. (IN)	AVG. I.D. (IN)
		HDPE COMMUNICATION DUCT - DR 15.5		HDPE COMMUNICATION DUCT - DR 9	
1/2	0.840	0.062	0.7086	0.093	0.6428
3/4	1.050	0.068	0.9058	0.117	0.8020
1	1.315	0.084	1.1369	0.146	1.0055
1 1/4	1.660	0.107	1.4332	0.184	1.2699
1 1/2	1.900	0.123	1.6392	0.211	1.4527
2	2.375	0.153	2.0506	0.264	1.8153
2 1/2	2.875	-	-	0.319	2.1987
3	3.500	0.226	3.0209	0.389	2.6753
4	4.500	0.290	3.8852	0.500	3.4400
5	5.563	0.359	4.8019	0.618	4.2528
6	6.625	0.427	5.7198	0.736	5.0647
8	8.625	0.556	7.4463	0.958	6.5940
10	10.750	0.694	9.2787	1.194	8.2187
12	12.750	0.823	11.0052	1.417	9.7460
		HDPE COMMUNICATION DUCT - DR 11		HDPE COMMUNICATION DUCT - DR 13.5	
1/2	0.840	0.076	0.6789	0.062	0.7086
3/4	1.050	0.095	0.8486	0.078	0.8846
1	1.315	0.120	1.0606	0.097	1.1094
1 1/4	1.660	0.151	1.3399	0.123	1.3992
1 1/2	1.900	0.173	1.5332	0.141	1.6011
2	2.375	0.216	1.9171	0.176	2.0019
2 1/2	2.875	0.261	2.3217	0.213	2.4234
3	3.500	0.318	2.8258	0.259	2.9509
4	4.500	0.409	3.6329	0.333	3.7940
5	5.563	0.506	4.4903	0.412	4.6896
6	6.625	0.602	5.3488	0.491	5.5841
8	8.625	0.784	6.9629	0.639	7.2703
10	10.750	0.977	8.6788	0.796	9.0625
12	12.750	1.159	10.2929	0.944	10.7487

# HDPE COMMUNICATION DUCT



## SUBMITTAL AND DATA SHEET

PIPE SIZE (IN)	AVG. O.D. (IN)	MIN. T. (IN)	AVG. I.D. (IN)	MIN. T. (IN)	AVG. I.D. (IN)
		HDPE COMMUNICATION DUCT - SCH40		HDPE COMMUNICATION DUCT - SCH80	
1/2	0.840	0.109	0.6089	0.147	0.5284
3/4	1.050	0.113	0.8104	0.154	0.7235
1	1.315	0.133	1.0330	0.179	0.9355
1 1/4	1.660	0.140	1.3632	0.191	1.2551
1 1/2	1.900	0.145	1.5926	0.200	1.4760
2	2.375	0.154	2.0485	0.218	1.9128
2 1/2	2.875	0.203	2.4446	0.276	2.2899
3	3.500	0.216	3.0421	0.300	2.8640
4	4.500	0.237	3.9976	0.337	3.7856
5	5.563	0.258	5.0160	0.375	4.7680
6	6.625	0.280	6.0314	0.432	5.7092
8	8.625	0.322	7.9424	-	-
10	10.750	0.365	9.9762	-	-
12	12.750	0.406	11.8893	-	-

